



**EAST DALEY**  
ANALYTICS

# Crude Product Suite



# Crude Product Suite Highlights



1

## Crude Production Models

Historical and forecasted crude oil supply by basin. A dynamic model which allows the user to test different scenarios by altering rig count, initial production rates, down time and drill time.

---

2

## Crude Hub Model

A macro model balanced via hub interactions. Includes historical and forecasted crude oil supply and demand by accounting for basin production, long-haul pipeline volumes, refineries, storage and import/export facilities.

---

3

## Basin Supply & Demand Reports

Detailed supply and demand models/reports by individual basin or market hub. Available: Bakken, Guernsey, DJ, Permian, Louisiana - Gulf of Mexico and Uinta. Developing: Canada, Corpus Christi, Cushing, Houston, Nederland and Patoka

---

4

## Structured Data

**Rig Activity Tracker** - rig activity by basin, state, county, producer and midstream system.  
**Louisiana SONRIS data (R2&R3)** – detailed historical receipts and deliveries by pipeline and refinery.  
**Texas T1 Data** – detailed historical receipts and deliveries by pipeline.  
**North Dakota NDIC Data** – detailed historical receipts and deliveries by pipeline.  
**FERC Form 6** - includes revenues, expenses and volumes for liquids pipelines.

---

5

## Energy Data Studio

Access to the first interactive energy infrastructure and production platform. Explore scenarios, download data and search our robust publication archive.

---

6

## Insights

Weekly Crude Oil Edge newsletter and Data Insights publications - includes data and analysis on infrastructure impacting North American crude oil supply and demand

---

7

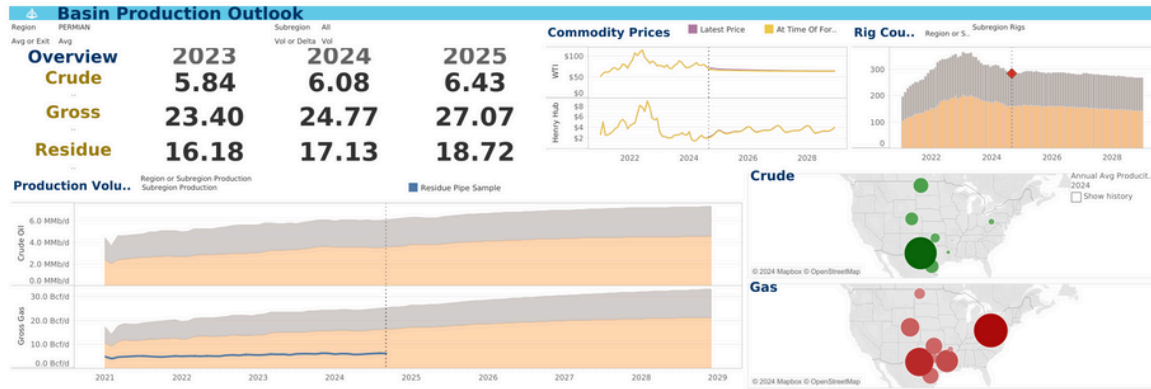
## Analyst Support

Unlimited direct access to the crude oil analytics team along with quarterly crude market update calls.

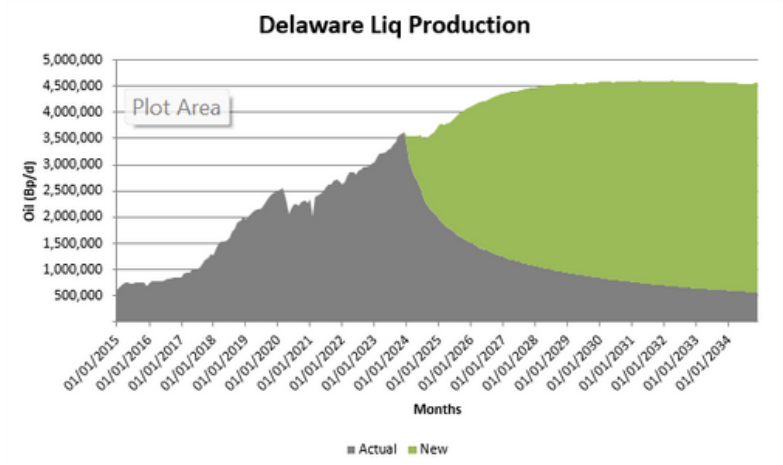
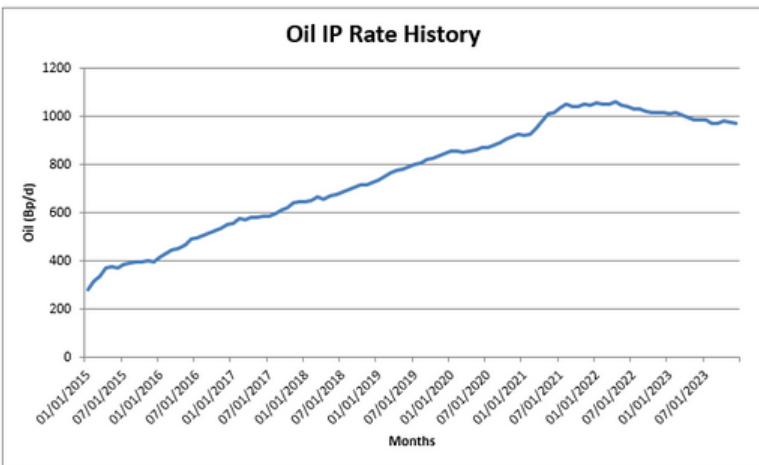
# Crude Product Suite

## Crude Production Models

Historical and forecasted crude oil supply by basin. The dynamic model allows the user to test different scenarios by altering rig count, initial production rates, down time and drill time.



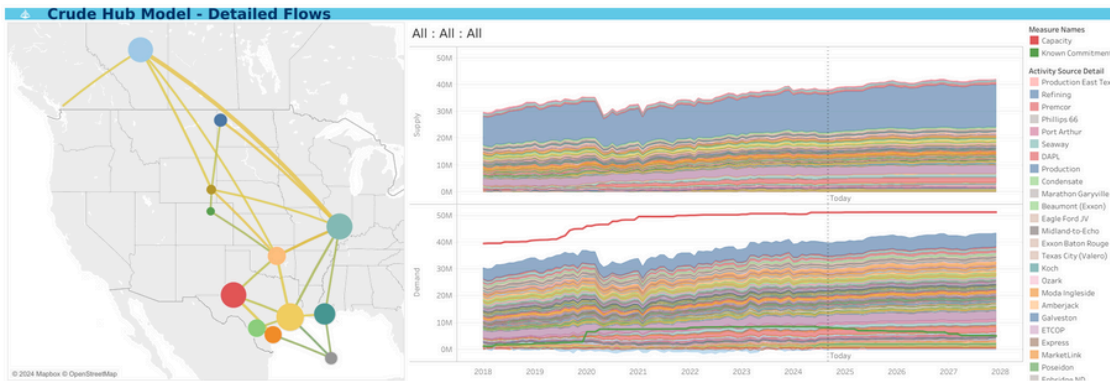
Month	WTI		HH		Completions			Rig Count			DELAWARE Gas (Mcf/d)			Oil (Bp/d)		
	Oil Price	Gas Price	Addl Comps	Wells Drilled	TIL	Rigs	Legacy	New	Total	Legacy	New	Total				
09/01/2023	\$89.58	\$2.64		257	255	180	15,207,647		15,207,647	3,430,825		3,430,825				
10/01/2023	\$85.57	\$2.99		298	288	179	15,276,158		15,276,158	3,537,341		3,537,341				
11/01/2023	\$77.17	\$2.71		285	282	178	15,393,167		15,393,167	3,598,025		3,598,025				
12/01/2023	\$72.08	\$2.53		239	257	175	15,500,532		15,500,532	3,618,690		3,618,690				
01/01/2024	\$73.93	\$3.21	50	290	343	175	15,118,516	430,006	15,548,523	3,377,610	171,118	3,548,727				
02/01/2024	\$76.77	\$1.72	0	276	285	179	14,352,503	1,196,027	15,548,530	3,081,423	467,306	3,548,729				
03/01/2024	\$80.49	\$1.50	0	284	239	176	13,909,094	1,709,885	15,618,979	2,930,736	623,469	3,554,205				
04/01/2024	\$84.85	\$1.60	0	287	290	171	13,165,892	2,183,271	15,349,163	2,800,098	748,115	3,548,411				
05/01/2024	\$78.53	\$2.13	0	293	276	169	12,752,095	2,665,008	15,417,103	2,660,778	883,185	3,543,963				
06/01/2024	\$78.65	\$2.55	0	280	284	162	12,529,445	3,084,945	15,614,390	2,564,166	993,693	3,557,859				
07/01/2024	\$80.42	\$2.09	0	276	287	159	12,371,335	3,478,223	15,849,559	2,406,539	1,098,017	3,504,556				
08/01/2024	\$75.32	\$1.99	0	280	293	161	12,070,510	3,857,713	15,928,222	2,300,917	1,196,804	3,497,721				
09/01/2024	\$69.09	\$2.04	50	357.27	330	160.1	11,778,707	4,268,902	16,047,609	2,222,419	1,308,415	3,530,834				
10/01/2024	\$67.67	\$2.28	50	368.95	326	160.0	11,504,169	4,698,242	16,202,410	2,150,792	1,426,422	3,577,214				
11/01/2024	\$66.98	\$2.60	50	364.05	330	163.1	11,245,212	5,097,273	16,342,485	2,085,044	1,528,272	3,613,317				
12/01/2024	\$66.52	\$3.10	50	376.15	407	163.1	11,000,381	5,576,445	16,576,825	2,024,380	1,660,771	3,685,151				
01/01/2025	\$66.26	\$3.39	0	382.48	369	165.9	10,768,397	6,078,438	16,846,836	1,968,153	1,800,968	3,769,121				
02/01/2025	\$66.09	\$3.26	-60	342.49	304	164.4	10,548,156	6,405,600	16,953,217	1,915,826	1,864,705	3,780,531				
03/01/2025	\$66.00	\$2.94	-60	375.77	316	163.0	10,338,684	6,921,248	17,260,352	1,866,951	1,898,808	3,765,759				
04/01/2025	\$65.94	\$2.81	-60	366.31	322	164.2	10,139,104	7,412,248	17,551,352	1,821,157	1,954,090	3,775,247				
05/01/2025	\$65.89	\$2.86	0	375.13	342	162.7	9,948,660	7,216,061	17,164,721	1,778,117	2,023,490	3,801,608				
06/01/2025	\$65.82	\$3.00	0	361.42	376	162.0	9,766,664	7,568,127	17,334,791	1,737,655	2,115,712	3,853,278				
07/01/2025	\$65.73	\$3.15	0	371.86	366	161.3	9,592,498	7,936,549	17,529,047	1,699,259	2,210,855	3,910,114				
08/01/2025	\$65.64	\$3.19	0	370.32	375	160.6	9,425,610	8,283,322	17,708,932	1,662,996	2,292,464	3,955,460				
09/01/2025	\$65.55	\$3.16	0	357.01	361	160.0	9,265,508	8,608,980	17,874,488	1,628,597	2,365,174	3,993,771				
10/01/2025	\$65.45	\$3.24	0	367.3	372	159.3	9,111,744	8,913,283	18,025,027	1,595,903	2,430,273	4,026,177				
11/01/2025	\$65.41	\$3.49	0	358.49	370	160.6	8,963,898	9,217,587	18,181,485	1,564,776	2,497,797	4,062,573				
12/01/2025	\$65.33	\$3.87	0	369.09	357	160.1	8,821,612	9,488,612	18,310,225	1,535,095	2,553,464	4,088,560				
01/01/2026	\$65.23	\$4.13	0	367.81	367	159.5	8,684,536	9,746,827	18,431,363	1,506,747	2,605,000	4,111,747				
02/01/2026	\$65.13	\$3.93	0	331.17	358	159.0	8,552,358	10,002,021	18,554,380	1,479,635	2,657,783	4,137,418				



# Crude Product Suite

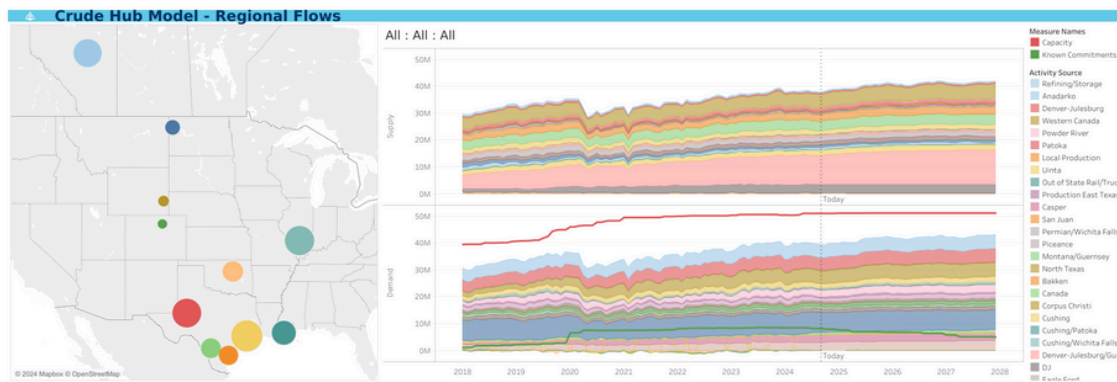
## Crude Hub Model

Hub model focusing on the commercial dynamics of hub-to-hub flows using a unique methodology to bring you accurate, dynamic crude oil forecasting: Built-In Volume Forecasts, Cross Commodity Constraints, Real-World Assessment, and Multiple Data Sources.

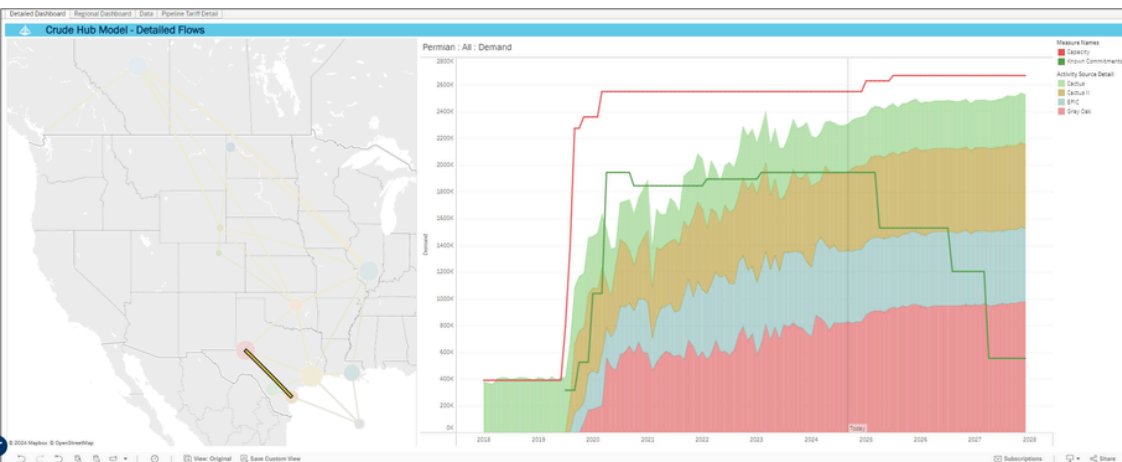


**Interactive hub and spoke model**

**Regional flow dynamics**



**Flows and contracts by pipeline corridors**

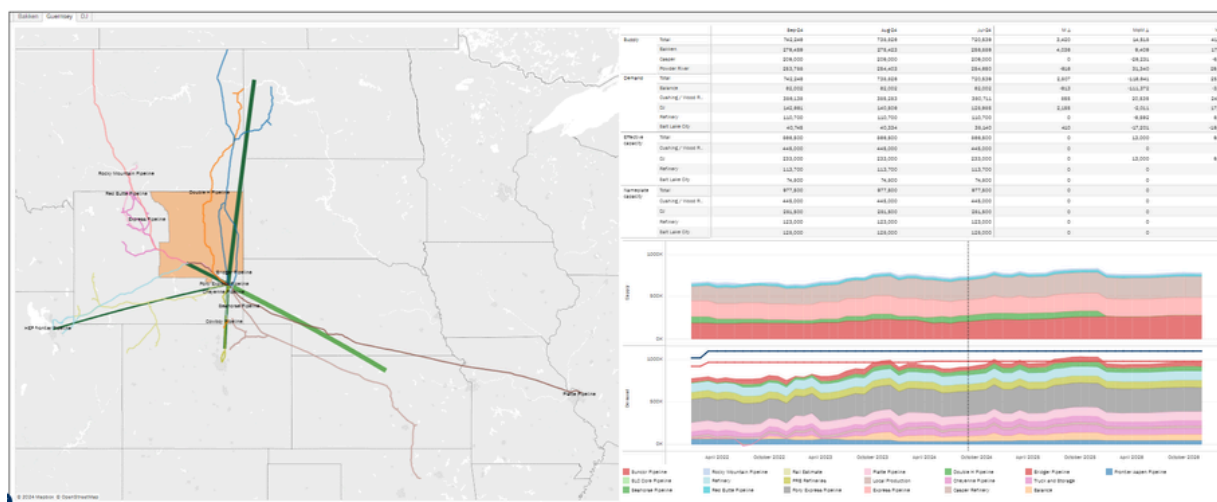




# Crude Product Suite

## Basin Supply & Demand

Basin Crude Oil Supply and Demand Models offer insights into the intricate dynamics of these markets. By accurately forecasting supply, demand, and pipeline financials, you can make informed decisions, mitigate risks, and capitalize on opportunities.



Actual (b/d)	Avg 2023	4Q23	1Q24	Q-o-Q Δ
<b>Supply</b>				
Bakken Production	1,244,917	1,331,667	1,255,000	(76,667)
Canadian Imports	5,325	7,285	9,653	2,368
<b>Total Supply</b>	<b>1,250,242</b>	<b>1,338,951</b>	<b>1,264,653</b>	<b>(74,298)</b>
<b>Demand</b>				
Clearbrook/Patoka	824,365	867,159	846,052	(21,107)
Guernsey	256,242	297,536	269,519	(28,017)
Canada	13,173	25,189	-	(25,189)
Refinery	67,000	67,000	56,533	(10,467)
Balance <sup>1</sup>	89,462	82,067	92,549	10,481
<b>Total Demand</b>	<b>1,250,242</b>	<b>1,338,951</b>	<b>1,264,653</b>	<b>(74,298)</b>

<sup>1</sup> Includes Rail Estimate and Truck & Storage

### Actual Supply & Demand

- 1Q24 supply decreased ~74 Mb/d (6%) vs 4Q23 primarily due to January's winter freeze. Canadian imports increased 33% Q-o-Q
- Clearbrook & Patoka Pipeline demand declined 2% Q-o-Q. Enbridge North Dakota Pipeline's volumes decreased ~16 Mb/d (8%) Q-o-Q as PADD 2 refinery demand shrunk likely due to refinery turnarounds.

Forecasted (b/d)	2Q24	3Q24	4Q24	1Q25	FY25	FY24 vs FY25
<b>Supply</b>						
Bakken Production	1,277,308	1,287,271	1,360,792	1,378,261	1,419,031	123,939
Canadian Imports	10,555	8,000	8,000	8,000	8,000	(1,052)
<b>Total Supply</b>	<b>1,287,863</b>	<b>1,295,271</b>	<b>1,368,792</b>	<b>1,386,261</b>	<b>1,427,031</b>	<b>122,887</b>
<b>Demand</b>						
Clearbrook/Patoka	859,429	870,096	905,180	913,042	931,388	61,199
Guernsey	259,345	270,590	297,426	303,802	316,183	41,963
Canada	10,000	10,000	11,667	12,500	14,167	6,250
Refinery	66,600	66,600	66,600	66,600	66,600	2,517
Balance <sup>1</sup>	92,489	77,984	87,919	90,318	98,693	10,958
<b>Total Demand</b>	<b>1,287,863</b>	<b>1,295,271</b>	<b>1,368,792</b>	<b>1,386,261</b>	<b>1,427,031</b>	<b>122,887</b>

<sup>1</sup> Includes Rail Estimate and Truck & Storage

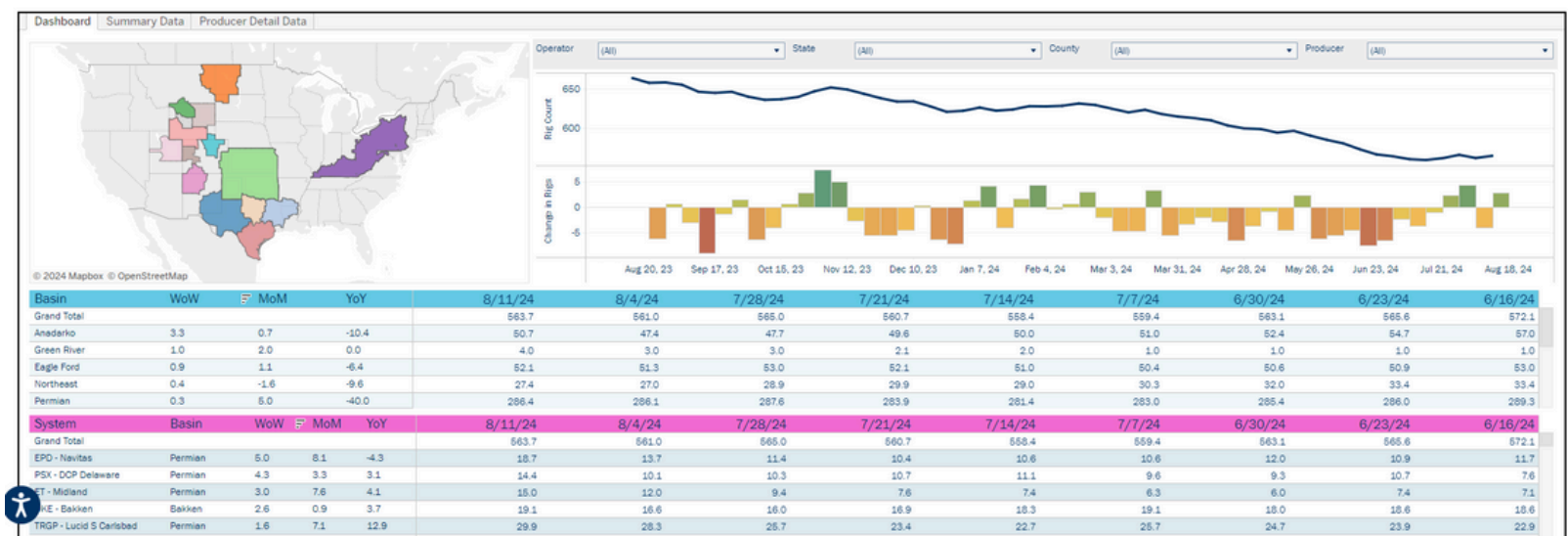
# Crude Product Suite

## Structured Data:

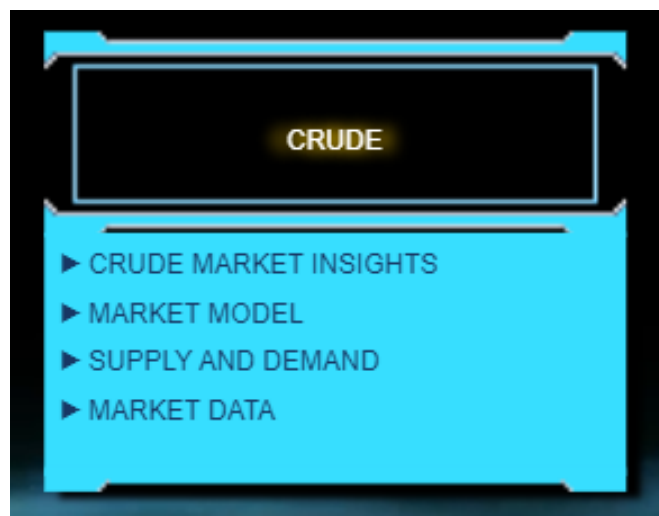
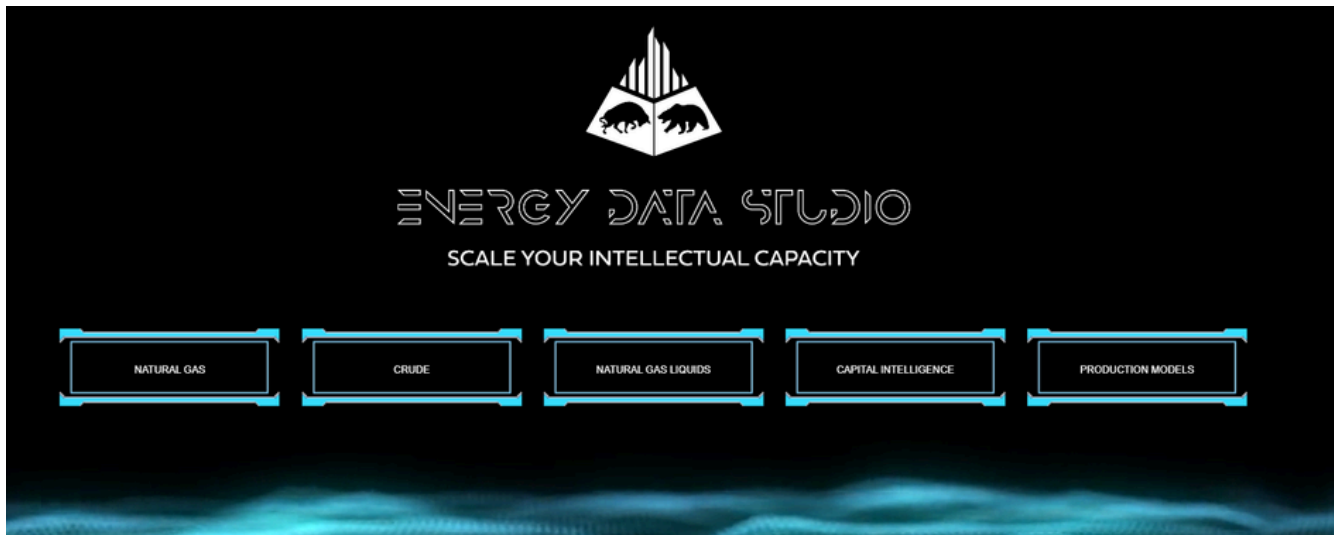
- **Rig Activity Tracker** - rig activity by basin, state, county, producer and midstream system.
- **Louisiana SONRIS data (R2&R3)** – detailed historical receipts and deliveries by pipeline and refinery.
- **Texas T1 Data** – detailed historical receipts and deliveries by pipeline.
- **North Dakota NDIC Data** – detailed historical receipts and deliveries by pipeline.
- **FERC Form 6** - includes revenues, expenses and volumes for liquids pipelines.

IdString	Pipeline	InStatement	AccountName	DisplayOrder	4Q2022	1Q2023	2Q2023	3Q2023	4Q2023	1Q2024	2Q2024
404_IS_Rev	Dakota Access, LLC	IS	Total revenue	1	262,218,272	262,725,902	292,426,817	297,835,449	321,571,866	314,543,625	332,794,140
404_IS_CrudeGthRev	Dakota Access, LLC	IS	Crude gathering revenue	2	-	-	-	-	-	-	-
404_IS_CrudeTransRev	Dakota Access, LLC	IS	Crude transportation revenue	3	254,546,926	255,526,445	285,032,127	289,664,615	313,547,581	306,864,665	324,836,415
404_IS_CrudeAllowRev	Dakota Access, LLC	IS	Crude allowance revenue	4	7,671,346	7,199,457	7,332,300	8,166,150	8,014,110	7,678,960	7,912,335
404_IS_CrudeStorRev	Dakota Access, LLC	IS	Crude storage revenue	5	-	-	-	-	-	-	-
404_IS_CrudeOthRev	Dakota Access, LLC	IS	Crude other revenue	6	-	-	62,390	4,684	10,175	-	45,990
404_IS_ProdGthRev	Dakota Access, LLC	IS	Products gathering revenue	7	-	-	-	-	-	-	-
404_IS_ProdTransRev	Dakota Access, LLC	IS	Products transportation revenue	8	-	-	-	-	-	-	-
404_IS_ProdAllowRev	Dakota Access, LLC	IS	Products allowance revenue	9	-	-	-	-	-	-	-
404_IS_ProdStorRev	Dakota Access, LLC	IS	Products storage revenue	10	-	-	-	-	-	-	-
404_IS_ProdOthRev	Dakota Access, LLC	IS	Products other revenue	11	-	-	-	-	-	-	-
404_IS_COS	Dakota Access, LLC	IS	Cost of service	12	9,219,128	10,460,914	12,416,560	10,726,951	13,652,169	11,974,696	15,763,096
404_IS_CrudeGthFuel	Dakota Access, LLC	IS	Crude gathering fuel and power	13	-	-	-	-	-	-	-
404_IS_CrudeTransFuel	Dakota Access, LLC	IS	Crude transportation fuel and power	14	9,219,128	10,460,914	12,416,560	10,726,951	13,652,169	11,974,696	15,763,096
404_IS_ProdFuel	Dakota Access, LLC	IS	Products fuel and power	15	-	-	-	-	-	-	-
404_IS_OpEx	Dakota Access, LLC	IS	Operating expenses	16	6,897,607	15,151,596	13,742,143	11,894,981	10,511,376	14,785,500	16,092,963
404_IS_CrudeGthOpEx	Dakota Access, LLC	IS	Crude gathering operation	17	-	-	-	-	-	-	-
404_IS_CrudeGthPropTaxes	Dakota Access, LLC	IS	Crude gathering taxes other than income	18	-	-	-	-	-	-	-
404_IS_CrudeTransOpEx	Dakota Access, LLC	IS	Crude transportation operation	19	1,421,708	3,531,396	2,993,406	4,188,008	2,890,848	3,361,367	4,712,995
404_IS_CrudeTransPropTaxes	Dakota Access, LLC	IS	Crude transport taxes other than income	20	5,475,899	11,620,200	10,748,737	7,706,973	7,620,528	11,424,133	11,379,968
404_IS_ProdOpEx	Dakota Access, LLC	IS	Products operation	21	-	-	-	-	-	-	-
404_IS_ProdPropTaxes	Dakota Access, LLC	IS	Products taxes other than income	22	-	-	-	-	-	-	-
404_IS_OpMargin	Dakota Access, LLC	IS	Operating margin	23	246,101,537	237,113,392	266,268,114	275,213,517	297,408,321	287,783,429	300,938,081
404_IS_SGA	Dakota Access, LLC	IS	Selling, general and administrative expenses	24	2,223,002	2,243,292	2,098,139	1,920,354	4,266,981	2,151,662	2,312,286
404_IS_CrudeGthGnA	Dakota Access, LLC	IS	Crude gathering general and administrative	25	-	-	-	-	-	-	-
404_IS_CrudeTransGnA	Dakota Access, LLC	IS	Crude transportation general and administrative	26	2,223,002	2,243,292	2,098,139	1,920,354	4,266,981	2,151,662	2,312,286
404_IS_ProdGnA	Dakota Access, LLC	IS	Products general and administrative	27	-	-	-	-	-	-	-
404_IS_EBITDA	Dakota Access, LLC	IS	EBITDA	28	243,878,535	234,870,100	264,169,975	273,293,163	293,141,340	285,631,767	298,625,795

## Rig Activity Tracker (formerly Midstream Activity Tracker)



# Access to East Daley's Energy Data Studio



**Reconciled FERC Form  
6 Data**

**Analyst Insights**

**Downloadable Reports  
and Data Sets**

**Interactive Production Models**

**Easily Access All Your Benefits  
in One Place**



## Free Weekly Crude Oil Newsletter

The Crude Oil Edge provides weekly updates on the US Crude Oil Market including supply and demand fundamentals, basin-level views, and analysis of market constraints and infrastructure proposals. We explore sub-basin dynamics and provide market insights on crude oil flows, infrastructure, and storage.

**Scan to Subscribe**



## Questions? Contact our team:



**Gage Dwan**  
gdwan@eastdaley.com



**Kristy Oleszek**  
koleszek@eastdaley.com

## Crude Products

**Scan to View More**

